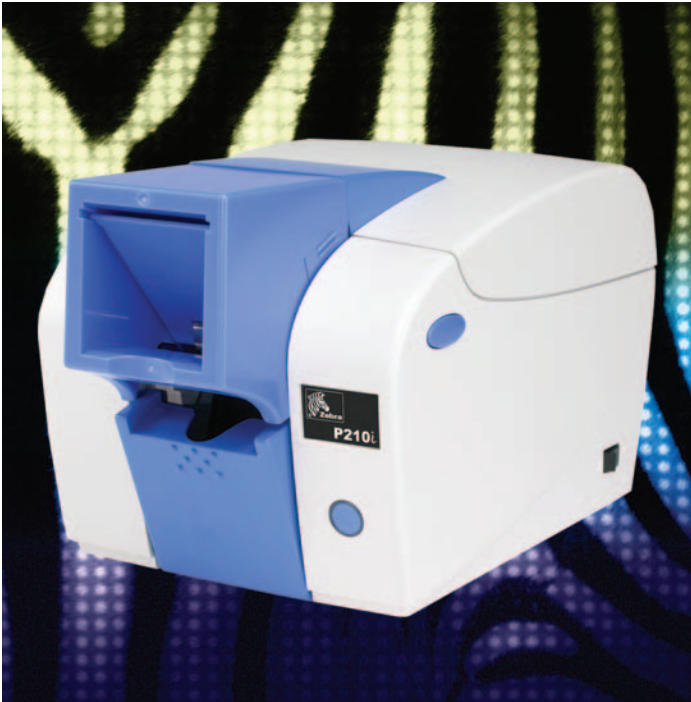




P210i

VALUE



P210i Card Printer

Basic Specifications:

- » Under 30 Seconds/Card Print Speed
- » Convenient Front Card Loading and Output
- » Full Color or Monochrome Single-Sided Card Printing
- » USB/Parallel or USB/Serial Interfaces
- » 50 Card Capacity Feeder
- » *i* Series Printers require the use of TrueColours™ *i* Series ribbons for full color printing

*i*series

Card Printing Is Easier Than Ever

The Zebra P210i sets new standards in affordability and compact design for single-sided color card printing. With the benefits of *i* series technology, and cartridge based ribbon, on demand color card printing is easier than ever.

Use the P210i card printer to print:

- » Employee ID cards
- » Time and Attendance cards
- » Personalized Gift and Membership cards
- » Loyalty cards

Zebra 210i Advantages

Advanced Color Printing: Enhanced color-processing firmware and new richer color formulation

Operator Convenience: Patented openACCESS® clamshell design, easy-to-use "load and go" ribbon cartridge system, quick reference Pocket Guide, Windows® 98, ME, NT, 2000 and XP printer drivers with install wizard

Economical Operation: Low cost printer for low-volume applications

***i* Series Intelligent Printing System:** Enhanced *i* Series functionality makes high image quality card printing a simple function for all users. The system features:

- » Advanced RFID Technology
- » Automatic Driver Configuration
- » Intelligent Color Optimization
- » Ribbon Image Counter & Ribbon Low Notification
- » Enhanced Ribbon Formulation

DiscountID

www.DiscountID.com
800-621-0559



**Card
Printer
Solutions**

P210i

Card Printer Product Specifications



General Specifications

- » High speed card printing
- » 120 cards/hour for single-sided color (YMCKO)
- » 900 cards/hour for resin black (K)
- » 2MB image memory standard/1MB flash memory
- » Windows[®] drivers for 98, ME, NT, 2000 and XP
- » Patented openACCESS[®] clamshell design
- » Front card loading and output
- » Multi-Function Button with LED indicator ring
- » Bi-directional driver communication
- » Two year warranty
- » Two year (unlimited passes) printhead warranty

Color Printing

- » Color dye sublimation or monochrome thermal transfer printing
- » Under 30 seconds/card full color single-sided (YMCKO)
- » 300 dpi (11.8 dots/mm) print resolution

Bar Codes

- » Code 39, Code 128 B & C with & without check digit
- » 2 of 5 & 2 of 5 Interleaved
- » UPC-A, EAN 8 & EAN 13
- » PDF-417 2D bar code and other symbologies can be printed via Windows drivers

Fonts

- » True Type fonts via Windows driver

Card Specifications

- » Types: PVC, PVC Composite
- » Card width/length: ISO CR-80-ISO 7810, 2.12" (54mm) x 3.38" (86mm)
- » Magnetic Stripe-ISO 7811
- » Card thickness: 30 mil (.76mm)
- » Card feeder capacity: 50 cards (30 mil)
- » Card output hopper capacity: 20 cards (30 mil)

Ribbon Specifications

- » *i* Series Printers require the use of *i* Series ribbons for full color printing
- » Monochrome: 500 cards/roll
- » Monochrome colors: black
- » YMCKO: 100 cards/roll

Communications Interface

- » USB and Centronics Parallel
- » USB and RS232 Serial

Mechanical (includes card feeder)

- » Width: 7.16in (182mm)
- » Depth: 11.9in (303mm)
- » Height: 7.1in (180mm)
- » Weight: 6.4lbs (2.9kg)

Electrical

- » 110 ~ 240 Volts AC, 50 ~ 60 Hz (auto switching)
- » FCC Class B, CE, UL and CUL approved

Environmental

- » Operating Temperature: 60°F to 86°F (15°C to 30°C)
- » Operating Humidity: 20% to 65% non-condensing
- » Storage Temperature: 23°F to 158°F (-5°C to 70°C)
- » Storage Humidity: 20% to 70% non-condensing
- » Ventilation: Free air

Options

- » Magnetic encoder, tracks 1 & 2
- » Cleaning supplies
- » Service manual

www.zebracard.com

*Optimized for use with Zebra media.



Zebra Technologies Corporation



An ISO 9001 registered company ©2004 ZIH Corp. Specifications listed are for base model printers with standard features only unless otherwise notes. Specifications subject to change without notice. All product and brand names are trademarks of their respective companies. All rights reserved. All Copyrights, Trade and Service Marks shown or depicted herein are registered by their owners. No infringement is made for or implied by the use thereof. **Part No. P210i-08/04**

North America

Zebra Technologies Corporation
Card Imaging Division
1001 Flynn Road
Camarillo, CA 93012-8706
USA
Telephone: +1 805 579 1800
Fax: +1 805 579 1808
Toll free in US: 800 452 4056
e-mail: cards@zebra.com

Europe, Middle East, Africa

Zebra Technologies Corporation
Card Imaging Division
The Valley Centre, Gordon Road
High Wycombe
Buckinghamshire HP13 6EQ, UK
Telephone: +44 870 241 1527
Fax: +44 870 241 0765
e-mail: eurosales@zebra.com

Asia Pacific

Zebra Technologies Corporation
Card Imaging Division
16 New Industrial Road
#05-03 Hudson TechnoCentre
Singapore 536204
Telephone: +65 6858 0722
Fax: +65 6885 0836
e-mail: asiasales@zebra.com

Latin America

Zebra Technologies Corporation
Card Imaging Division
6175 NW 153rd St. #121
Miami Lakes, FL 33014
USA
Telephone: +1 305 558 3100
Fax: +1 305 558 8485
e-mail: latinsales@zebra.com