

DTC550 DIRECT-TO-CARD PRINTER/ENCODER

ONE VERSATILE PRINTER FOR
ALL YOUR ID CARD PRINTING NEEDS.

DiscountID[™]

www.DiscountID.com
800-621-0559

FARGO[®]
Part of HID Global **HID**

DTC550

DIRECT-TO-CARD PRINTER/ENCODER

The right choice for easy printing, encoding and laminating ID cards across your organization.



Think of it as the workhorse of card printers.

Most organizations today need a secure way to create ID cards. They also need an easy way to distribute them, and the flexibility to accommodate changes and growth. They need the Fargo DTC550.

The Fargo DTC550 Direct-to-Card Printer/Encoder is exceptionally hardworking. Its heavy-duty construction makes it the right choice for high-volume card printing and encoding, allowing you to quickly print a variety of cards for multiple applications. You can even add an extra layer of durability with the optional Lamination Module, and extra security to your cards with holographic Visual Security Solutions™. The DTC550 is versatile, able to deliver the level of personalization and functionality your organization demands. And it's surprisingly simple to use, with easy set up and intuitive operation, including a user-friendly SmartScreen™ to monitor print status.

Flexible design protects your organization – and your investment.

Change is a constant in organizations, and the DTC550 gives you tremendous flexibility whenever you need to reconfigure your ID card issuance system.

The DTC550 is one of the most versatile ID card printers available, handling a wide range of secure ID card applications; from on-demand photo IDs, to high-volume customer loyalty cards, to sophisticated access cards with embedded electronics.

The DTC550 produces high-quality ID cards using two different Direct-to-Card (DTC®) printing methods: dye-sublimation for vivid colors and accurate photographic images, and resin thermal transfer for sharp black text and bar codes that can be easily read by infrared or visible light scanners.



Physical Security:
The DTC550 produces access control cards for protecting facilities and secured areas like labs and server rooms.

You can order the DTC550 with either a single-sided or dual-sided print engine. With a variety of options, the DTC550 can save you time by printing, read/writing and laminating up to three different e-card technologies — plus magnetic stripe — *all in a single pass*. And that includes encoding smart cards and reading proximity cards. However



Versatility starts here. A basic DTC550 uses Fargo's Direct-to-Card technology to print full-color, single- and dual-sided cards. Match specific needs with connectivity, lamination and e-card encoding options.



DTC550 DIRECT-TO-CARD PRINTER/ENCODER

- 1 *Lamination option adds an extra layer of security and durability to extend card life.*
- 2 *Incomplete or improperly encoded cards land in the Reject Card Hopper.*
- 3 *SmartScreen™ LCD Control Panel displays helpful status messages and prompts.*
- 4 *Dual Card Hopper allows printing on two different card stocks.*
- 5 *Encoding options handle magnetic stripe, prox, contactless and smart cards.*
- 6 *Ethernet port and internal print server enable secure network printing.*

your card issuance needs change, the DTC550 can adapt.

Everywhere you need it.

The Fargo DTC550 is an ideal solution for issuing cards at multiple locations. With an Ethernet port and internal print server, you can install a DTC550 anywhere on a LAN. That gives greater freedom when you're planning widespread or high-volume card issuance for applications such as employee access cards, government and student IDs, customer loyalty and membership cards.

Protecting against counterfeiters and physical damage.

Want to protect ID badges from alteration, counterfeiting and everyday wear? Add the optional Card Lamination Module to the DTC550, either factory-installed or as a field upgrade. Fargo



Tougher, more secure cards. Overlaminates add durability and higher-level visual security features.

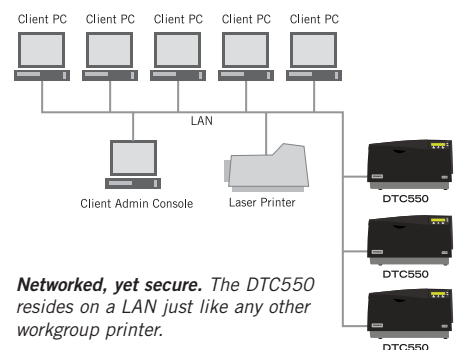
H o l o g r a p h i c Overlaminates give your cards a higher level of

security protection and also add a layer of physical protection. They provide durability against swipe abrasion, prevent dye-migration (onto plastic card pouches, for example), and shield against image-fading UV light. If your application requires secure cards that resist forgery and tampering, or if your cards are subject to extra physical wear, consider the optional Card Lamination Module.

Easily integrates into your infrastructure.

A key feature of the DTC550 is that it plays well with everything else on your network. The DTC550 connects to your Windows®-based PC through its USB port. It can also be added to your network as easily as any workgroup printer. And its print driver provides bi-directional status information, so you can monitor and manage the DTC550 just as you would any other networked printer.

The DTC550 is fully compatible with most ID card issuance software including Fargo Asure ID® Photo ID software. Plus, Fargo can provide a software development kit that will help you integrate the DTC550 into other applications such as security systems and Human Resources databases.



Networked, yet secure. The DTC550 resides on a LAN just like any other workgroup printer.

A hardworking printer for every need.

Only one card printer is able to deliver the functionality and versatility your organization demands. From great-looking photo ID cards to high-volume card printing and encoding applications, the DTC550 is the right choice.



The Fargo DTC550 Direct-to-Card Printer/Encoder meets the varied needs of organizations such as:

- Corporations
- Post-secondary educational institutions
- Public safety departments
- Hospitals and research centers
- State and local government facilities
- Membership and loyalty card programs



Learn more about the Fargo DTC550 Direct-to-Card Printer/Encoder by contacting an authorized Fargo integrator. To find a Fargo integrator near you, visit www.fargo.com

Specifications Overview (complete DTC550 specs available at www.fargo.com/dtc550-specs)									
Print Method:	Dye-Sublimation / Resin Thermal Transfer								
Resolution:	300 dpi (11.8 dots/mm)								
Colors:	Up to 16.7 million / 256 shades per pixel								
Print Speed:**	Batch Mode: • 7 seconds per card / 514 cards per hour (K)* • 12 seconds per card / 300 cards per hour (KO)* • 27 seconds per card / 144 cards per hour (YMCKO)* • 36 seconds per card / 109 cards per hour (YMCKOK)* • 34 seconds per card / 102 cards per hour (YMCKK/lamination)*								
Print Applications:	Single- and dual-sided printing for text, logos, bar codes, signatures and photos in full-color								
Accepted Card Thickness:	Print only: .020" (20 mil) to .050" (50 mil) / .508mm to 1.27mm (single-sided printing only for 50 mil cards) Print/Lamination: .030" (30 mil) to .040" (40 mil) / .762mm to 1.02mm								
Input Hopper Card Capacity:	Dual hoppers, 100 cards each (.030" / .762mm)								
Output Hopper Card Capacity:	100 cards (.030" / .762mm)								
Software Drivers:	Windows® 2000/XP/Server 2003/Vista								
Print Area:	CR-80 edge-to-edge (3.36"L x 2.11"W / 85.3mmL x 53.5mmW) CR-79 (3.30"L x 2.04"W / 83.9mmL x 51.8mmW)								
Warranty:	• Printer: Two years including one year of free printer loaner support (U.S. only); optional Extended Warranty Program (U.S. only) • Printhead: Two years, unlimited pass with UltraCard™ Cards								
Additional Options:	<table border="0"> <tr> <td>• Card Lamination Module</td> <td>• Card hopper lock</td> </tr> <tr> <td>• Printer cleaning kit</td> <td>• Magnetic stripe encoding</td> </tr> <tr> <td>• Ethernet with internal print server</td> <td>• E-card encoding</td> </tr> <tr> <td>• Dual-sided printing</td> <td></td> </tr> </table>	• Card Lamination Module	• Card hopper lock	• Printer cleaning kit	• Magnetic stripe encoding	• Ethernet with internal print server	• E-card encoding	• Dual-sided printing	
• Card Lamination Module	• Card hopper lock								
• Printer cleaning kit	• Magnetic stripe encoding								
• Ethernet with internal print server	• E-card encoding								
• Dual-sided printing									

*Indicates the ribbon type and the number of ribbon panels printed where Y=Yellow, M=Magenta, C=Cyan, K=Resin Black, O=Overlay

**Print speed indicates an approximate print speed and is measured from the time a card drops into the output hopper to the time the next card drops into the output hopper. Print speeds do not include encoding time or the time needed for the PC to process the image. Process time is dependent on the size of the file, the CPU, amount of RAM and the amount of available resources at the time of the print.

Your Total Solution

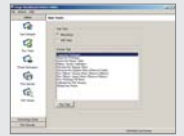
Every Fargo printer/encoder is the central component of a complete Fargo Card Identity System. We also offer software, materials, cameras and accessories — everything you need from one trusted source, for a total solution to your card printing needs.

Software

Fargo printer/encoders work with Fargo Asure ID® applications and all other leading card creation and issuance management software.



Fargo printer/encoders also come with Fargo Workbench™, a software toolkit for set up, printer security, diagnostics and firmware upgrades.



Materials

Fargo ribbons, films, overlaminates, and other materials not only ensure superior print quality for long-lasting, great-looking cards, they add features that increase durability and resist counterfeiting. That means fewer card replacements and lower cost per card.



Cameras and Accessories

Fargo offers a selection of digital cameras, photo lighting equipment and backgrounds, plus card accessories such as lanyards and clips.

